

# CERTIFICATE OF LOCATION OF GOVERNMENT CORNER

SOUTHEAST Corner of Section 31, Township 107N, Range 39W

5th Principal Meridian, State of Minnesota, County of MURRAY

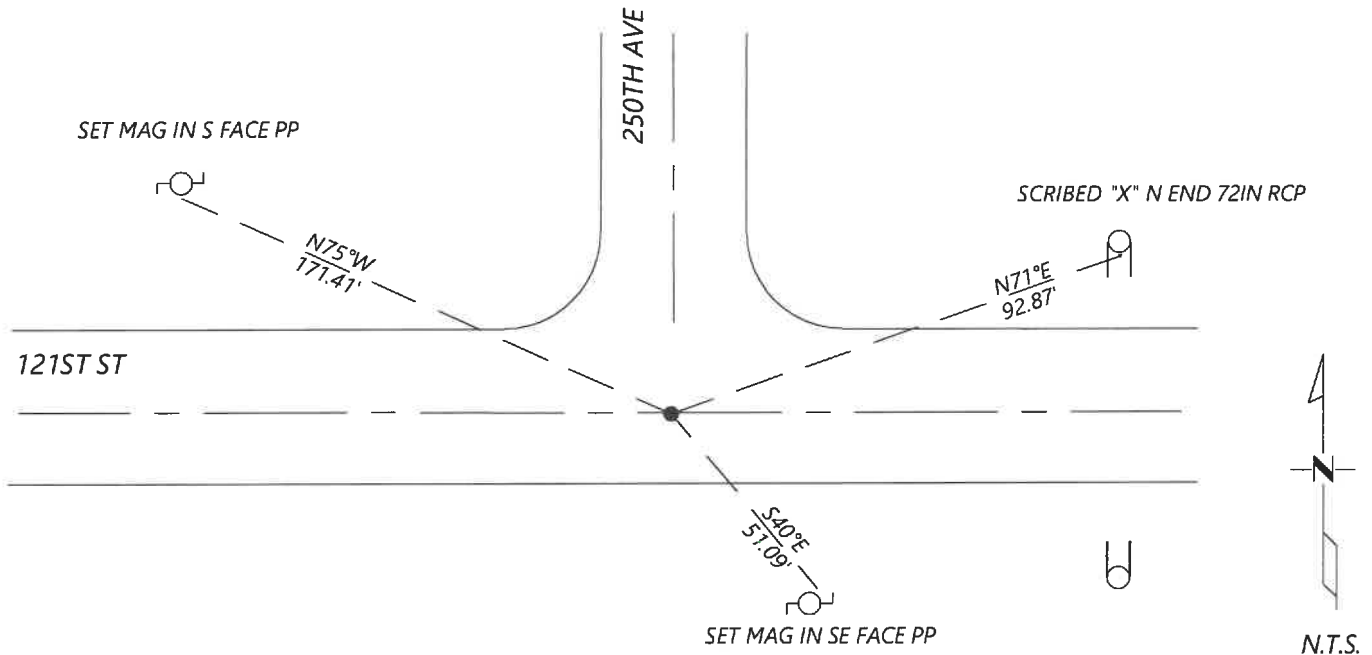
At the corner location shown on the sketch:

On 8/27/2020 found a IRON WITH ILLEGIBLE CAP DOWN 02.FT  
DATE

left monument as found       lowered monument       removed monument (explain)

On \_\_\_\_\_ placed a \_\_\_\_\_  
DATE

### SKETCH OF REFERENCE TIES



Statement of evidence for this corner location is on back of this page.

I hereby certify that this document was researched and prepared by me or under my direct supervision and that I am a licensed Land Surveyor under the laws of the State of Minnesota.

Signature [Handwritten Signature]

Date 6/16/2021 License No. 45874

Title:

- Land Surveyor       Professional Engineer
- County Surveyor       County Engineer

### OFFICE OF THE COUNTY RECORDER

County of Murray

I hereby certify that this document was filed in the Co.

Recorder's office at \_\_\_\_\_ M. on the \_\_\_\_\_ day of \_\_\_\_\_ A.D. 20

County Recorder Karen Brown  
by JUN 22 2021, Deputy

DOCUMENT NO. \_\_\_\_\_

JASON LATZKE  
Minnesota License No. 45874

**Statement of Evidence:**

Southeast Corner of Section 31, Township 107 North, Range 39 West, 5th Principal Meridian, Murray County, Minnesota.

*JUNE 6, 1895 - SURVEY RECORD FOR SECTION 5 SHOWS 47 FT NW OF CREEK BED STAKE AND PITS.*

*5/16/2013 - CORNER CERTIFICATE FILED BY PERRY ZIESKE SHOWS A FOUND HUB AT THE CORNER (IN LINE WITH FENCE SOUTH) AND PLACED A 5/8" IRON WITH CAP 23008. HE LISTS THE MURRAY COUNTY COORDINATES (2007 ADJ.) AS N 163456.24 E 553591.31.*

*SEPTEMBER 2020 - WESTWOOD PROFESSIONAL SERVICES SEARCHED AND FOUND IRON W/ ILLEGIBLE CAP AT INTERSECTION OF N/E/W ROADS. POSITION FITS COORDINATES LISTED PER 2013 CORNER CERTIFICATE. ACCEPTED MONUMENT AND ESTABLISHED NEW REFERENCE TIES.*

Analysis of the recovered data, field evidence and survey measurements, indicates that the monument found is the correct perpetuation of this corner. For additional information concerning this corner please contact Westwood Professional Services.